

Insulation Kits

Uponor features a variety of insulation kits designed for specific applications:

- Straight Insulation Kit
- Tee Insulation Kit
- 90-degree Insulation Kit
- H-Insulation Kit

For a description of these products, refer to **Chapter 2: Products and Hardware**.

Tools Required

- Hand saw
 - Tape measure
 - Chamfering tool
 - Sharp razor knife
 - Permanent ink marker
- Sharp scissors
 - Torque wrench
 - Pipe lubricant
 - Clean rag

The following figure shows examples of insulation kits for an H connection and a tee connection. Refer to **Table 4-2** for dimensions.

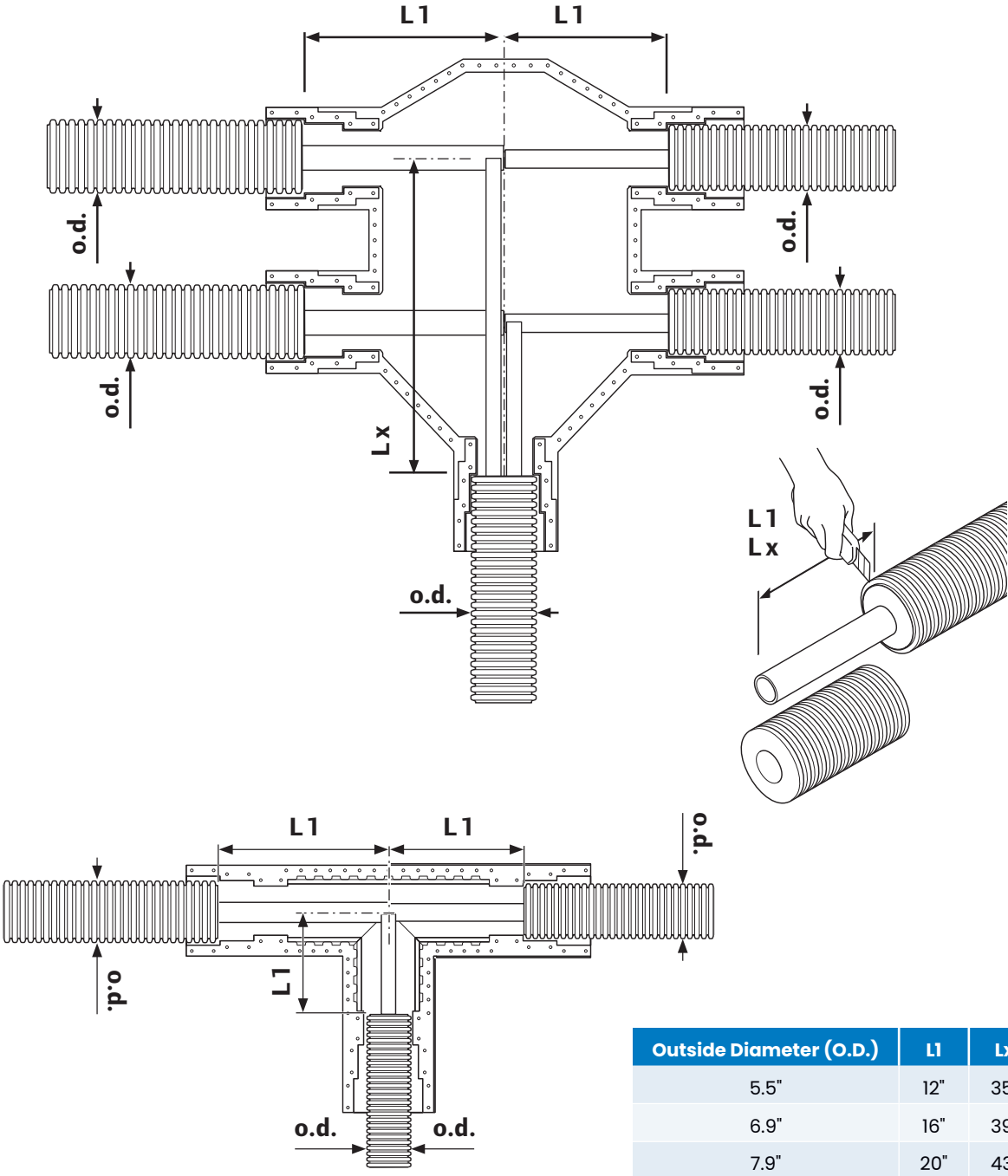


Figure 4-61: Insulation Kit examples

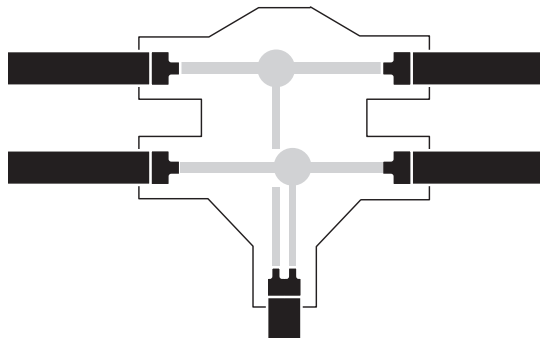
Table 4-2: Pipe diameter and cut measurements

Installation

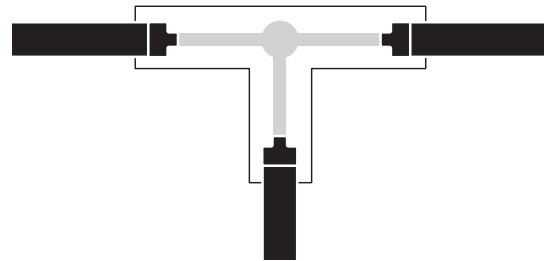
The following outlines the basic steps for pipe installation using insulation kits. It is helpful to become familiar with the previous installation instructions for the Rubber End Cap and the WIPEX Fittings or ProPEX Fittings when following these instructions for connecting pipe using insulation kits.

Uponor offers several types of insulation kits depending on specific application requirements. Refer to **Figure 4-62** for configurations of these insulation kits.

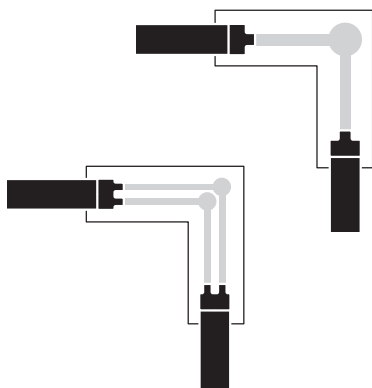
Insulation Kits for Uponor Pre-insulation Pipe Systems



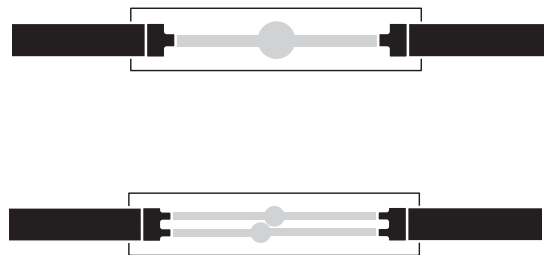
H Insulation Kit



Tee Insulation Kit



Elbow Insulation Kit



Straight Insulation Kit

Figure 4-62: Insulation Kit configurations

1. Determine pipe lengths for the pipe assembly, measure the amount of pipe needed for the assembly. Refer to **Figure 4-63**.

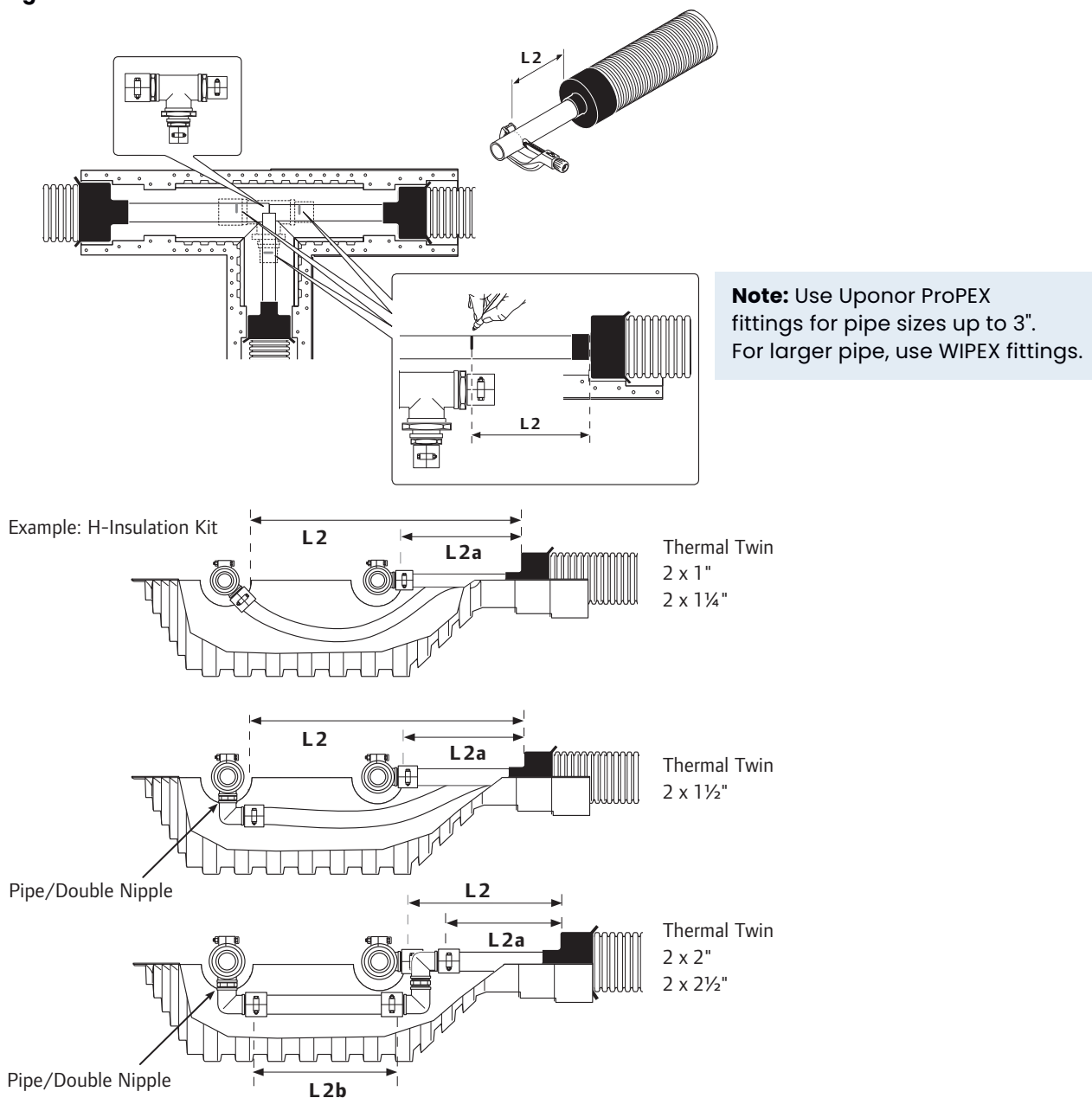


Figure 4-63: Determining lengths for assembly and pipe styles

2. Remove casing and insulation. Peel off the casing and remove the required amount of insulation (taking into account the length of the End Cap). Only peel off what is absolutely required in order to connect the pipe.
3. Install Rubber End Cap. Refer to **the installation instructions on pages 39-40**.

Important: Don't apply the stainless steel clamp when installing into an insulation kit.

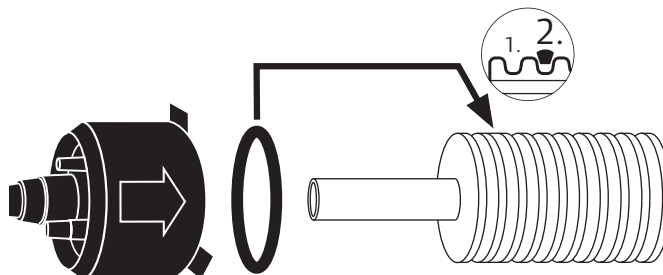


Figure 4-64: Install Rubber End Cap

4. Assemble the connection. See **Figure 4-65** for an example of a tee connection, and refer to **WIPEX Fittings** on **pages 41-43**.

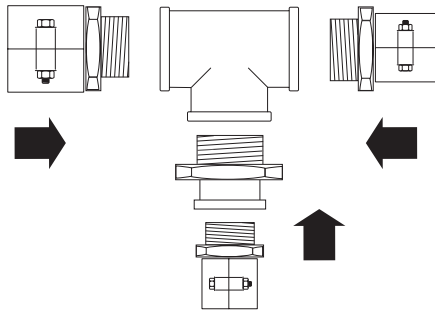


Figure 4-65: Assemble the connection

5. Join the pipes with fittings. Refer to **WIPEX Fittings** on **page 41-43** for details.
6. Pressure test the system. Refer to **page 37** for pressure testing instructions.

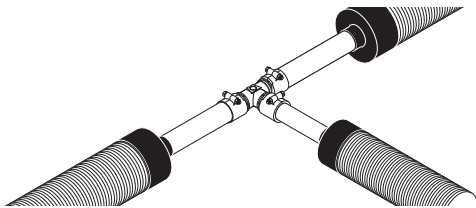


Figure 4-66: Pressure test

7. Apply sealant compound in the bottom of the insulation shell. **Figure 4-67** illustrates a Tee-connection.

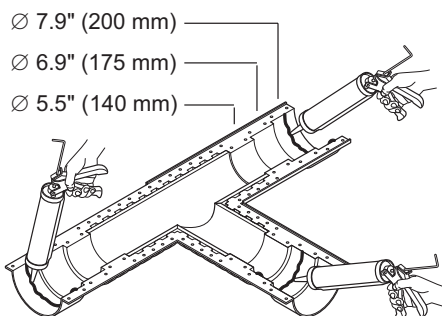


Figure 4-67: Apply sealant

8. Place the connected pipes into the insulation shell as shown (**Figure 4-68**).

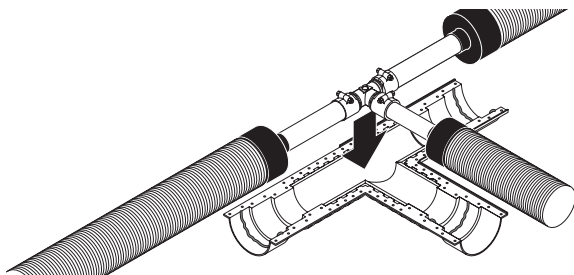


Figure 4-68: Placing the pipes

9. Apply sealant compound to end caps and shell as shown (**Figure 4-69**).

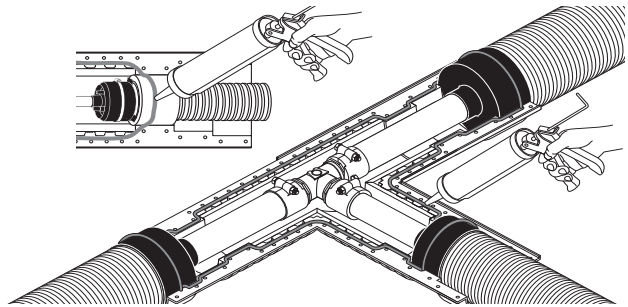


Figure 4-69: Sealant compound

10. Place the top part of the insulation shell into place over the piping.

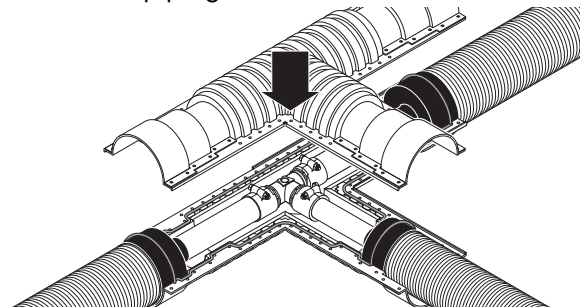


Figure 4-70: Top shell of Insulation Kit

11. Tighten all bolts and screws of the outer shell, and hammer in all rivets.

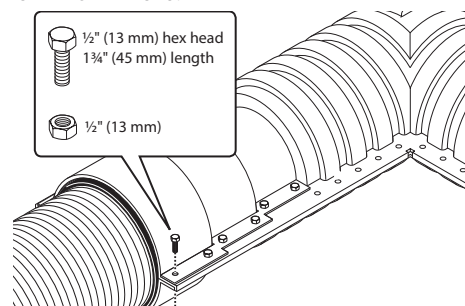


Figure 4-71: Fastening the outer shell

12. Tighten all bolts and screws and hammer rivets on the inner shell as shown.

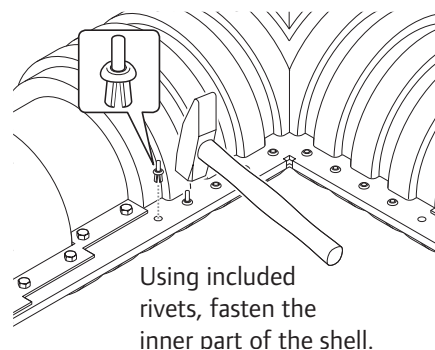


Figure 4-72: Fastening the inner shell